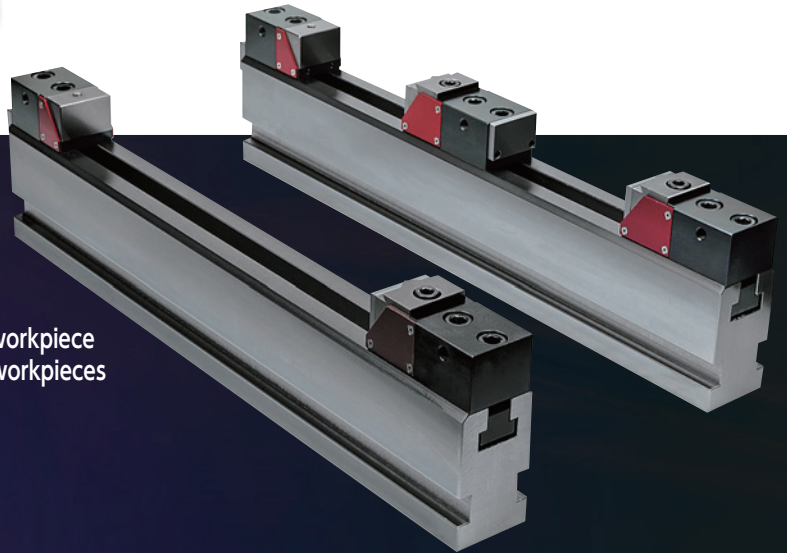


Suitable for BT30 Drilling and Tapping Machines

V-clampsystem

VCP-50F-570



Configuration

VCP-50F-570-1

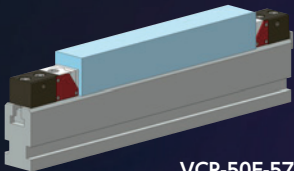
Clamper model

Main unit base length

Number of clamp units

VCP-50F-570-1
VCP-50F-570-2

Clamping of one workpiece
Clamping of two workpieces



VCP-50F-570-1

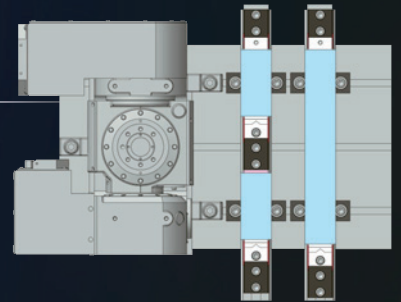


VCP-50F-570-2

Feature 1

When attached on the main unit base, the machine stroke length can be fully utilized

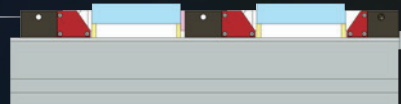
- Y-axis effective stroke: **370mm** (when attached to a BT30 machine)
▶ See the loading diagram
- Workpiece reference height: **100mm** Blade length can be adjusted on a BT30 machine
- Clamps can be installed in the available space on an NC rotary table



Feature 2

Two workpieces can be machined by adding a clamp unit

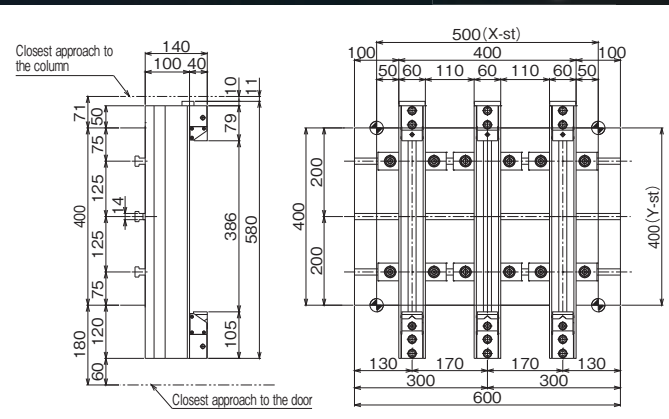
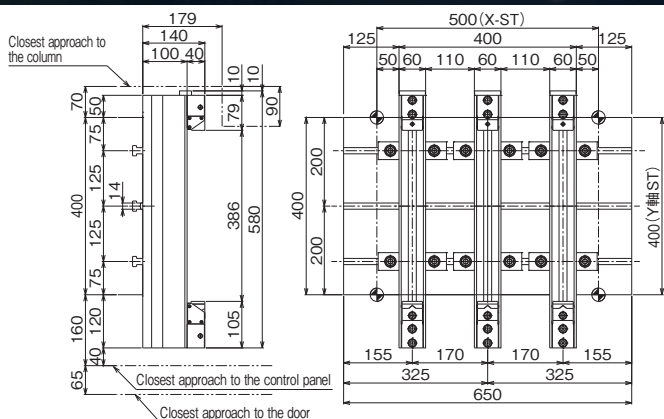
- Programming for workpieces with different dimensions is available by offsetting the distance from the fixed unit on the Y-axis
- Central clamp unit equipped with a jaw on the rear surface
- The fixed unit is not equipped with the wedge mechanism (standard)



FANUC α-D14 loading diagram



Brother S500X1 loading diagram



Please ask us about customizing the clamp unit pitches.

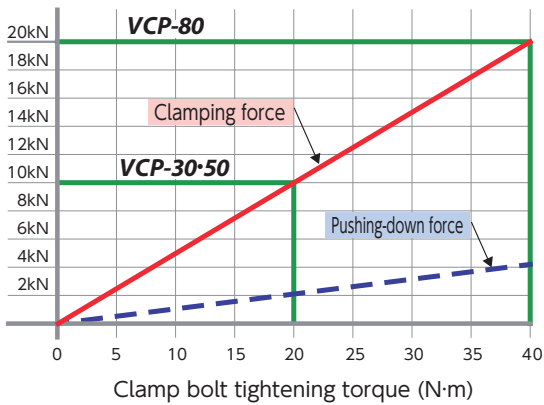
Specifications

Units: mm

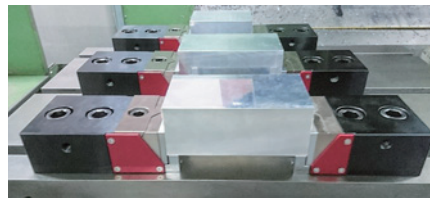
NO	Model	VCP-30	VCP-50	VCP-80	VCP-50F	VCP-80F
①	Fixed unit Wedge mechanism	○	○	○	-	-
②	Jaw width	30	46	76	46	76
③	Jaw height	35	29.8	34.8	29.8	34.8
④	Unit height	35	40	45	40	45
⑤	Work mounting face height / with a standard auxiliary jig	20	20	20	20	20
⑥	Guide pin diameter (selectable)	12(14)	18(14,16)	18(20,22)	18(14,16)	18(20,22)
⑦	Clamp unit: Jaw effective stroke length	3.5	3.5	3.5	3.5	3.5
⑧	Clamp bolt: maximum tightening torque N·m	20	20	40	20	40
⑨	Fixing bolt: tightening torque N·m	40	80	80	80	80
⑩	Maximum clamping force K·N	10	10	20	10	20
⑪	Maximum pushing down force K·N	2	2	4	2	4
⑫	Fixed unit: Jaw offset	○	○	○	-	-
⑬	Fixed unit: Jaw offset amount/with max. tightening force	0.06	0.06	0.10	-	-
⑭	Net weight Kg	2	3	6.5	3	6.5

- Notes
- For ⑧, ⑩ & ⑪, please check Characteristics Graph.
 - ⑪ varies depending on the coefficient of friction between workpiece and jaw.
 - For ⑧ & ⑨, managing tightening torque with a torque wrench is recommended.
 - ⑫ please check Characteristics Graph.

Characteristics graph



Loading example



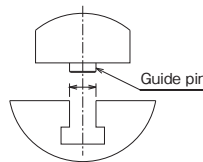
● Setting of multiple workpieces



● Mass block attached to a lateral MC

Please specify the size of guide pin in your order

- Guide pin diameter (T-slot width) in mm
e.g. 18mm, Type: VCP-50 (18)
- Note: One fixed unit and One clamp unit are required for clamping.



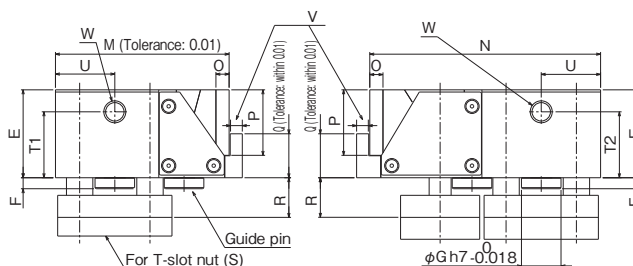
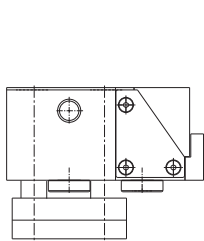
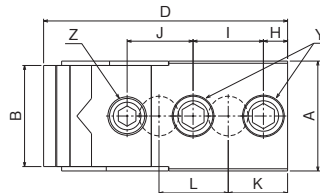
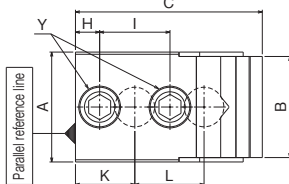
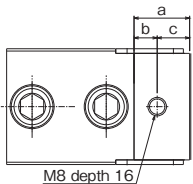
Dimensions

Fixed unit

Clamp unit

VCP-□□F (Without wedge mechanism)

VCP-□□ (With wedge mechanism)



	VCP-30	VCP-50	VCP-80	VCP-50F	VCP-80F
A	34	50	80	50	80
B	30	46	76	46	76
C	85	85	115	85	115
D	111	111	140	111	140
E	35	40	45	40	45
F	5	5	7	5	7
G	12,14	14,16,18	18,20,22	14,16,18	18,20,22
H	11	11	20	11	20
I	32	32	40	32	40
J	30	30	38	30	38
K	27	27	40	27	40
L	31.5	31.5	40	31.5	40
M	79	79	105	79	105
N	105	105	130	105	130
O	6	6	6	6	6
P	26	31	36	31	36
Q	20	20	20	20	20
R	12	18	18	18	18
S	12	18	18	18	18
T1	25	30	35	30	35
T2	25	30	30	30	30
U	27	27	40	27	40
V	5.5	5.5	9.5	5.5	9.5
W	M10 x depth 12	M10 x depth 20	M10 x depth 20	M10 x depth 20	M10 x depth 20
Y	M10	M12	M16	M12	M16
Z	M10	M10	M12	M10	M12
a	-	24	28	24	28
b	-	10	14	10	14
c	-	14	14	14	14