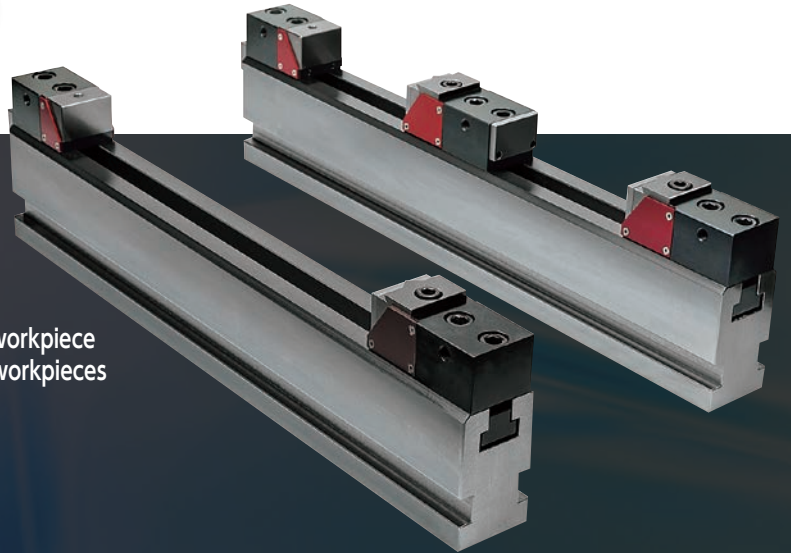


Suitable for BT30 Drilling and Tapping Machines

V-clampsystem

VCP-50F-570



Configuration

VCP-50F-570-1

Clamper model

Main unit base length

Number of clamp units

VCP-50F-570-1
VCP-50F-570-2

Clamping of one workpiece
Clamping of two workpieces



VCP-50F-570-1

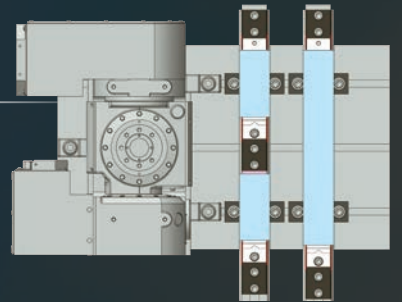


VCP-50F-570-2

Feature 1

When attached on the main unit base, the machine stroke length can be fully utilized

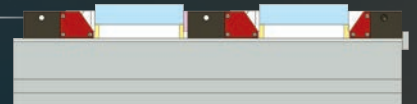
- Y-axis effective stroke: **370mm** (when attached to a BT30 machine)
▶ See the loading diagram
- Workpiece reference height: **100mm** Blade length can be adjusted on a BT30 machine
- Clamps can be installed in the available space on an NC rotary table



Feature 2

Two workpieces can be machined by adding a clamp unit

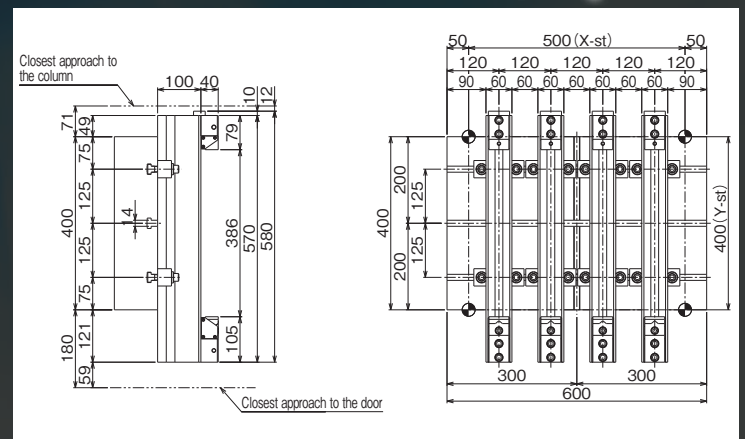
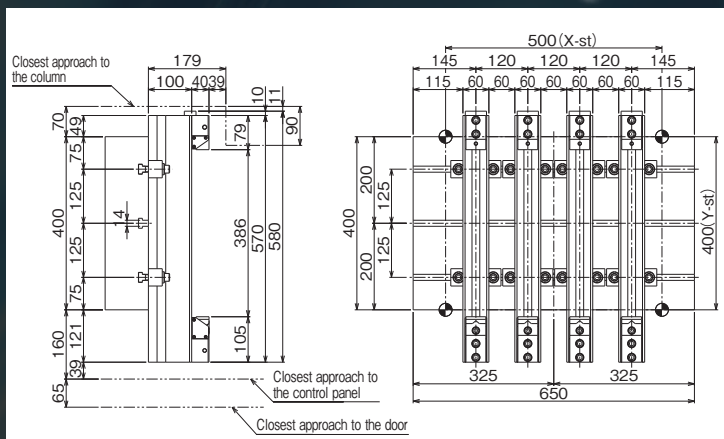
- Programming for workpieces with different dimensions is available by offsetting the distance from the fixed unit on the Y-axis
- Central clamp unit equipped with a jaw on the rear surface
- The fixed unit is not equipped with the wedge mechanism (standard)



FANUC α-D14 loading diagram



Brother S500X1 loading diagram



Specifications

Units: mm

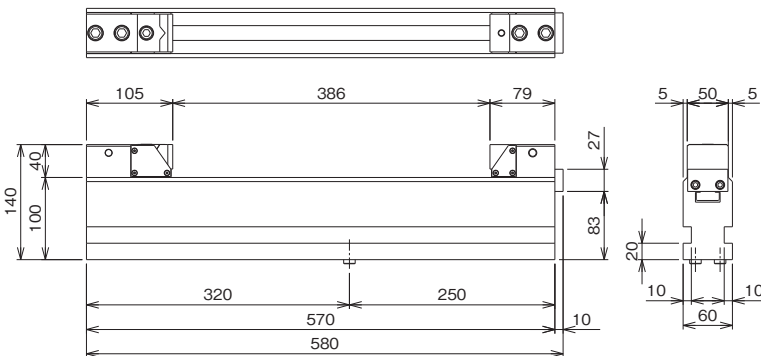
NO	Model	VCP-50F-570-1	VCP-50F-570-2
①	Number of clamp units	1	2 ¹⁾
②	Fixed unit wedge mechanism ²⁾	Optional	Optional
③	Fixed unit jaw offset	Optional	Optional
④	Jaw width	46	46
⑤	Jaw height	29.8	29.8
⑥	Jaw opening (Max)	386	137.5 (Even)
⑦	Overall height	140	140
⑧	Working mounting face height	100	100
⑨	Guide pin diameter	14	14
⑩	Clamp unit: Jaw effective stroke length	3.5	3.5
⑪	Clamp bolt: maximum tightening torque	N · m	20
⑫	Fixing bolt: tightening torque	N · m	80
⑬	Maximum clamping force	K · N	10
⑭	Maximum pushing down force	K · N	2
⑮	Entire length	570	570
⑯	Net weight	Kg	25
			27

Notes 1) Central clamp unit is provided 2) Wedge mechanism optional

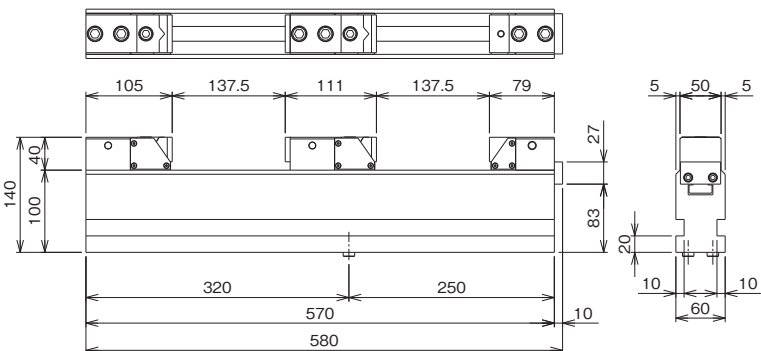
- For ⑬ & ⑭, please check Characteristics Graph 1.
- ⑬ varies depending on the coefficient of friction between workpiece and jaw.
- For ⑪ & ⑫, managing tightening torque with a torque wrench is recommended.
- Auxiliary jig is not provided.

Dimensions

● VCP-50F-570-1



● VCP-50F-570-2

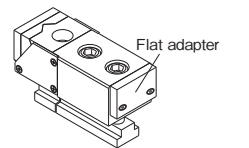
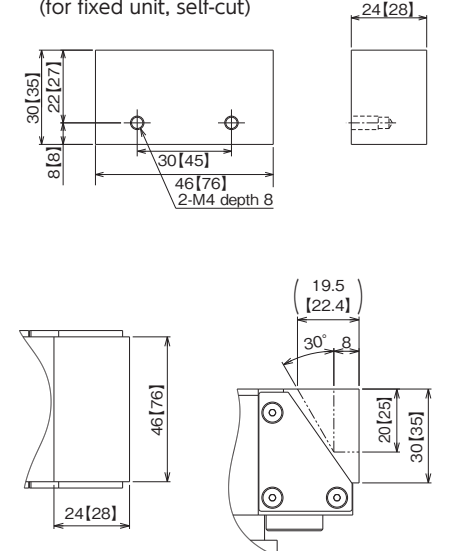


Loading example



Optional unit

● Unannealed jaw (for fixed unit, self-cut)



Central clamp unit (For clamping two workpieces)

*VCP-50 unannealed jaw adjustment range
Dimensions in the parentheses are for the VCP-80

● The specifications, drawings and photos on this leaflet are subject to change without prior notice.

● Some products in this leaflet fall under the category of strategic items prescribed by the Foreign Exchange and Foreign Trade Control Law. When exporting such products, permission based on the same law is required.

● Permission has been obtained from Brother Industries Ltd. and Fanuc Corporation to use images of their machining centers in the leaflet. Tsudakoma Corp. and Tsudakoma Techno Support Corp. are responsible for the manufacturing of the NC rotary tables and machine vises, respectively.

Inquiries

Tsudakoma Corp. Group

Tsudakoma Techno Support Corp.

5-100 Awada, Nonoichi, Ishikawa 921-8529 Japan

TEL: +81-76-294-5180 FAX: +81-76-294-5156

WJ80-16E

2018-8

Distributor