

General-purpose clumper

V-clamp

VCP-30·50·80

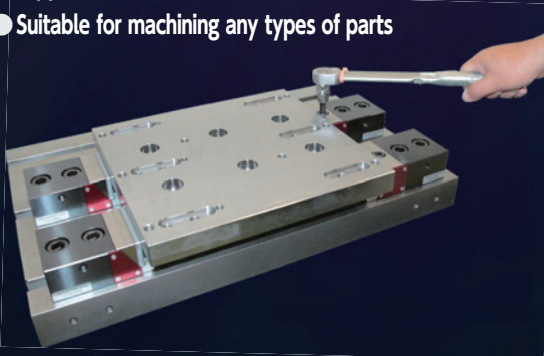


VCP-50 clamp (2 sets)

Innovative clamping
using a V-shaped
slot wedge

Feature 1 High precision general-purpose side clamp

- High precision clamping for molding dies
Clamping force: **4t** max. (when 2 sets of VCP-80 are used)
- Stable and optimum fastening by using a torque wrench for thin parts & parts made of aluminum, copper, resin, etc.
- Suitable for machining any types of parts



Feature 2 Maximize the machining area

- Attach directly to the T-slot of the table



- Speedy setup – easily adjust to the size and shape of workpieces

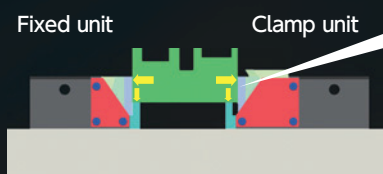


- Y-direction loading is possible by using the main unit base
Y stroke length can be fully utilized
▶ *See “V-clamp System”



Feature 3 The V-shaped slot wedge device prevents the workpiece from rising

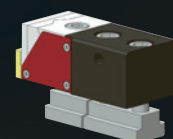
- **V-shaped slot jaws** are attached to fixed unit and clamp unit.
(Patent pending)
- **Pull-down mechanism** for accurate positioning and clamping of workpieces
- **F-type (without wedge)** is also available for the fixed unit*



- High precision machining
- Cutting condition is improved



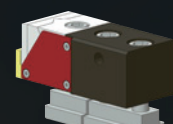
Fixed unit
(Standard type: with wedge)



Clamp unit



Fixed unit
(F-type: without wedge)



Clamp unit

*Pull-down mechanism not available on the fixed side

Specifications

Units: mm

NO	Model	VCP-50F-570-1	VCP-50F-570-2
①	Number of clamp units	1	2 ¹⁾
②	Fixed unit wedge mechanism ²⁾	Optional	Optional
③	Fixed unit jaw offset	Optional	Optional
④	Jaw width	46	46
⑤	Jaw height	29.8	29.8
⑥	Jaw opening (Max)	386	137.5 (Even)
⑦	Overall height	140	140
⑧	Working mounting face height	100	100
⑨	Guide pin diameter	14	14
⑩	Clamp unit: Jaw effective stroke length	3.5	3.5
⑪	Clamp bolt: maximum tightening torque N · m	20	20
⑫	Fixing bolt: tightening torque N · m	80	80
⑬	Maximum clamping force K · N	10	10
⑭	Maximum pushing down force K · N	2	2
⑮	Entire length	570	570
⑯	Net weight Kg	25	27

Notes 1) Central clamp unit is provided 2) Wedge mechanism optional

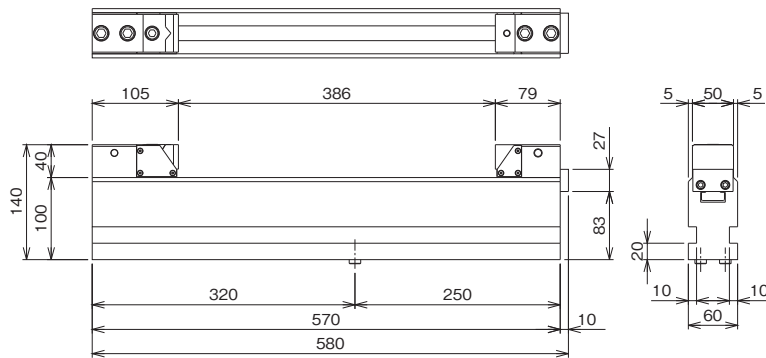
- For ⑬ & ⑭, please check Characteristics Graph.
 - ⑬ varies depending on the coefficient of friction between workpiece and jaw.
 - For ⑪ & ⑫, managing tightening torque with a torque wrench is recommended.
 - Auxiliary jigs are omitted from the dimensional drawing.
- Central clamp units come without auxiliary jigs.

Loading example

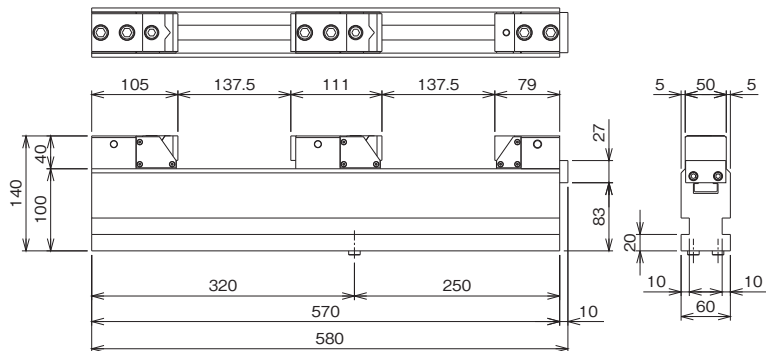


Dimensions

● VCP-50F-570-1

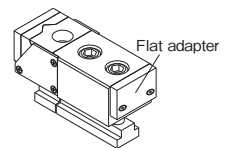
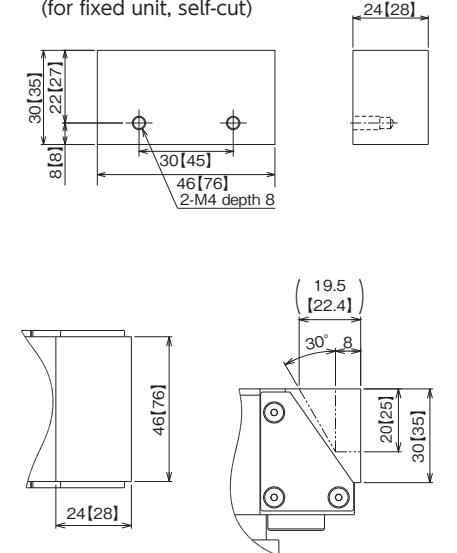


● VCP-50F-570-2



Optional unit

● Unannealed jaw (for fixed unit, self-cut)



Flat adapter
Central clamp unit
(For clamping two workpieces)

*VCP-50 unannealed jaw adjustment range
Dimensions in the parentheses are for the VCP-80

- The specifications, drawings and photos on this leaflet are subject to change without prior notice.
- Some products in this leaflet fall under the category of strategic items prescribed by the Foreign Exchange and Foreign Trade Control Law. When exporting such products, permission based on the same law is required.
- Permission has been obtained from Brother Industries Ltd. and Fanuc Corporation to use images of their machining centers in the leaflet. Tsudakoma Corp. and Tsudakoma Techno Support Corp. are responsible for the manufacturing of the NC rotary tables and machine vises, respectively.

Inquiries

Tsudakoma Corp. Group

Tsudakoma Techno Support Corp.

5-100 Awada, Nonoichi, Ishikawa 921-8529 Japan
TEL: +81-76-294-5180 FAX: +81-76-294-5156

WJ80-20F

2020.9

Distributor